

OWNER
ARCHITECT
STRUCTURAL
ENGINEER
CONTRACTOR
LANDSCAPE
ARCHITECT
REALTOR
CONTACT

OAK  PROPERTIES, LLC



Caitlin Shores, CCIM
918.688.4040
caitlin@wscommercial.co



Lindsey Warren
918.946.6791
lindsey@wscommercial.co



Boston 16.
42 E. 16th St.

units: 42 / 44 / 46 / 48



Boston 16.

SITE AMENITIES

VEHICLE ACCOMMODATIONS

- (10) parking spaces
- (1) van accessible parking space
- (2) bike racks

NORTH ENTRANCE

- street front
- patio space
- patio access

SOUTH ENTRANCE

- accessible ramp
- covered entry
- mailbox location

LANDSCAPING BY ALABACK DESIGN

- hardy greens
- seasonal blooms
- variety of species

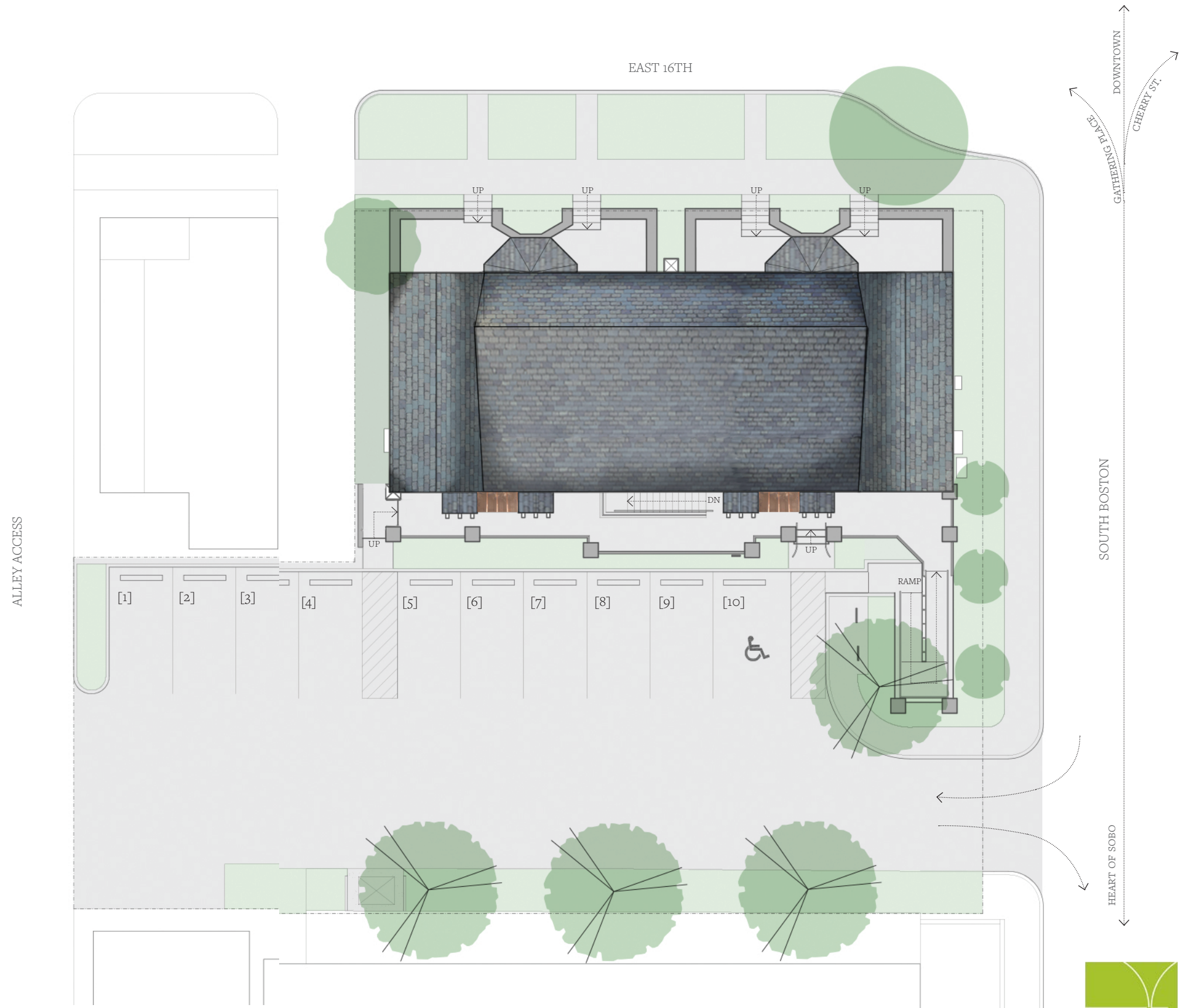
DISTRICT AMENITIES

SOUTH BOSTON

- north end of sobo district
- day + night life
- walk + bike-able district

north

1/16" - scale



original slate roof

-04-



-05-



updated parking and ADA
compliant access

grey limestone
columns

new canopy entrance
clad in a slate and
copper roofing



divided tenant
access

restored hardwood
lintels

new energy efficient
windows



Boston 16.

FLOOR PLANS

unit square footage

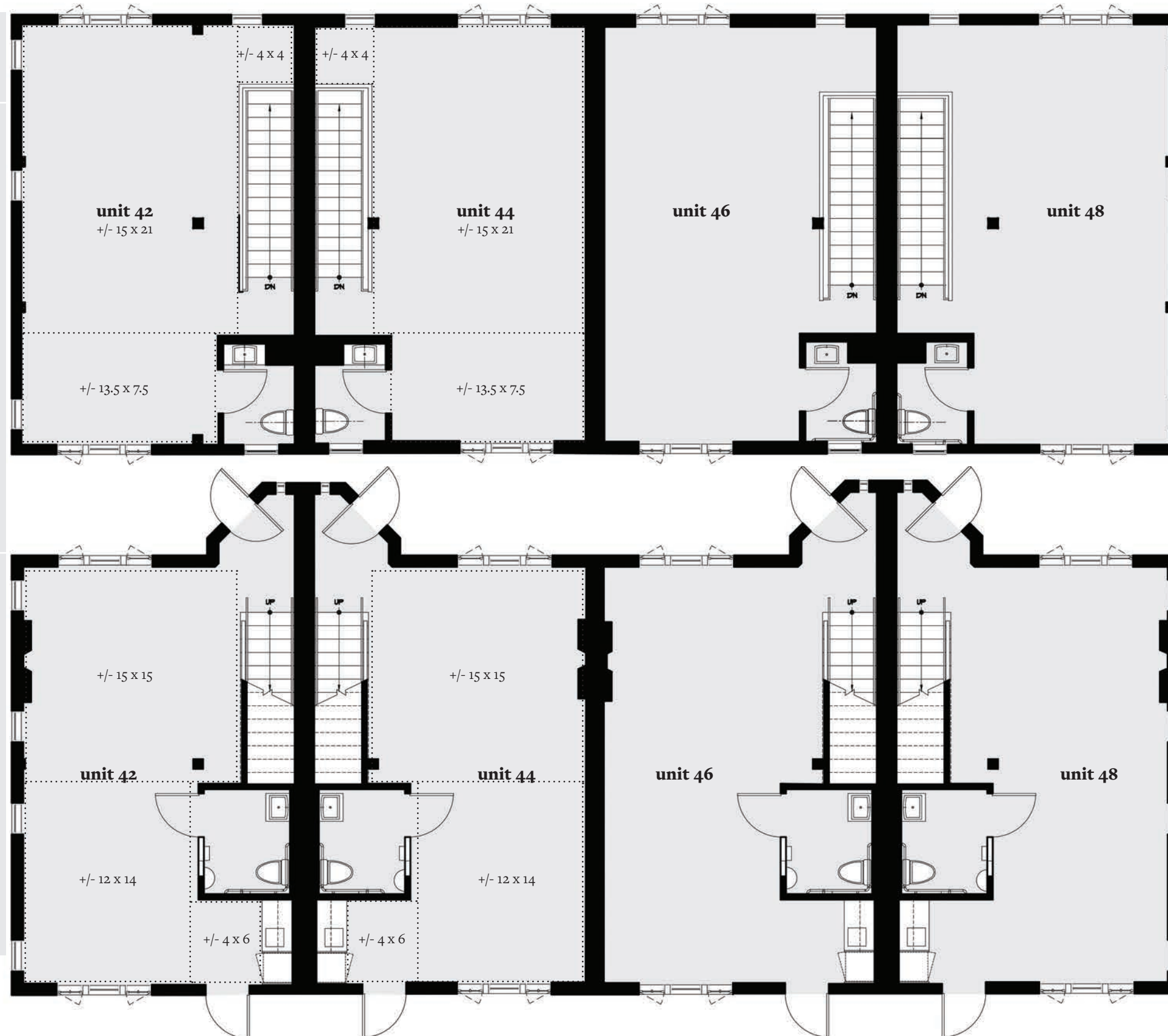
42	605 sf
44	604 sf
46	604 sf
48	607 sf

UPPER LEVEL

unit square footage

42	631 sf
44	630 sf
46	629 sf
48	635 sf

LOWER LEVEL



total unit square footage

42	1,236 sf
44	1,234 sf
46	1,233 sf
48	1,242 sf

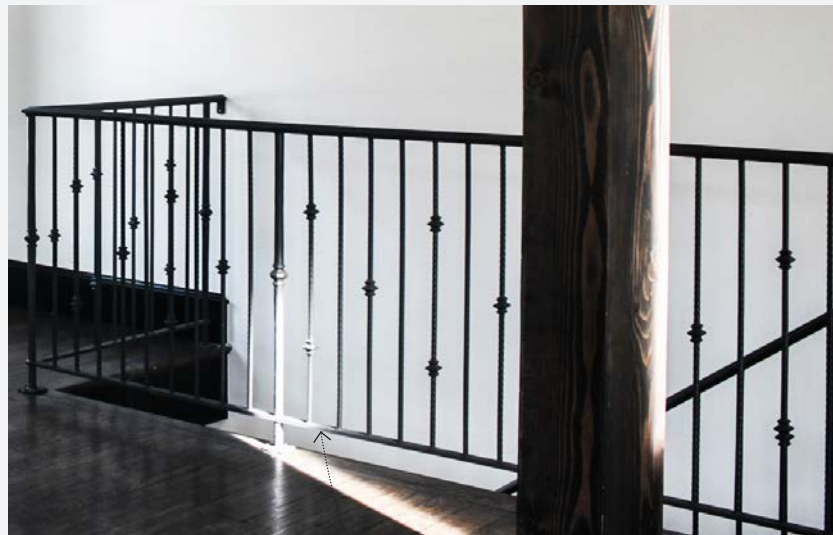


original terracotta
fireplace tilework give a
nod to the past

restored and exposed
beam work and iron
collar ties



vintage/chic globe
pendants adorn the
upper vaulted units
42+48



locally forged iron railing
found throughout



...modern flair with a
classical composition
tie each of these four
units together

bespoke elements found
throughout



updated finishes and
fixtures

..many of the original finishes were left or restored to honor the past of this building. The Victorian-era style with 3-wythe structural walls and rich ornate detailing on the exterior is now wonderfully blended into a modern detailed beauty on the interior.



Boston 16.

OFFICE LAYOUT OPTIONS

UPPER LEVEL



sliding glass partition
per tenant

LOWER LEVEL

