



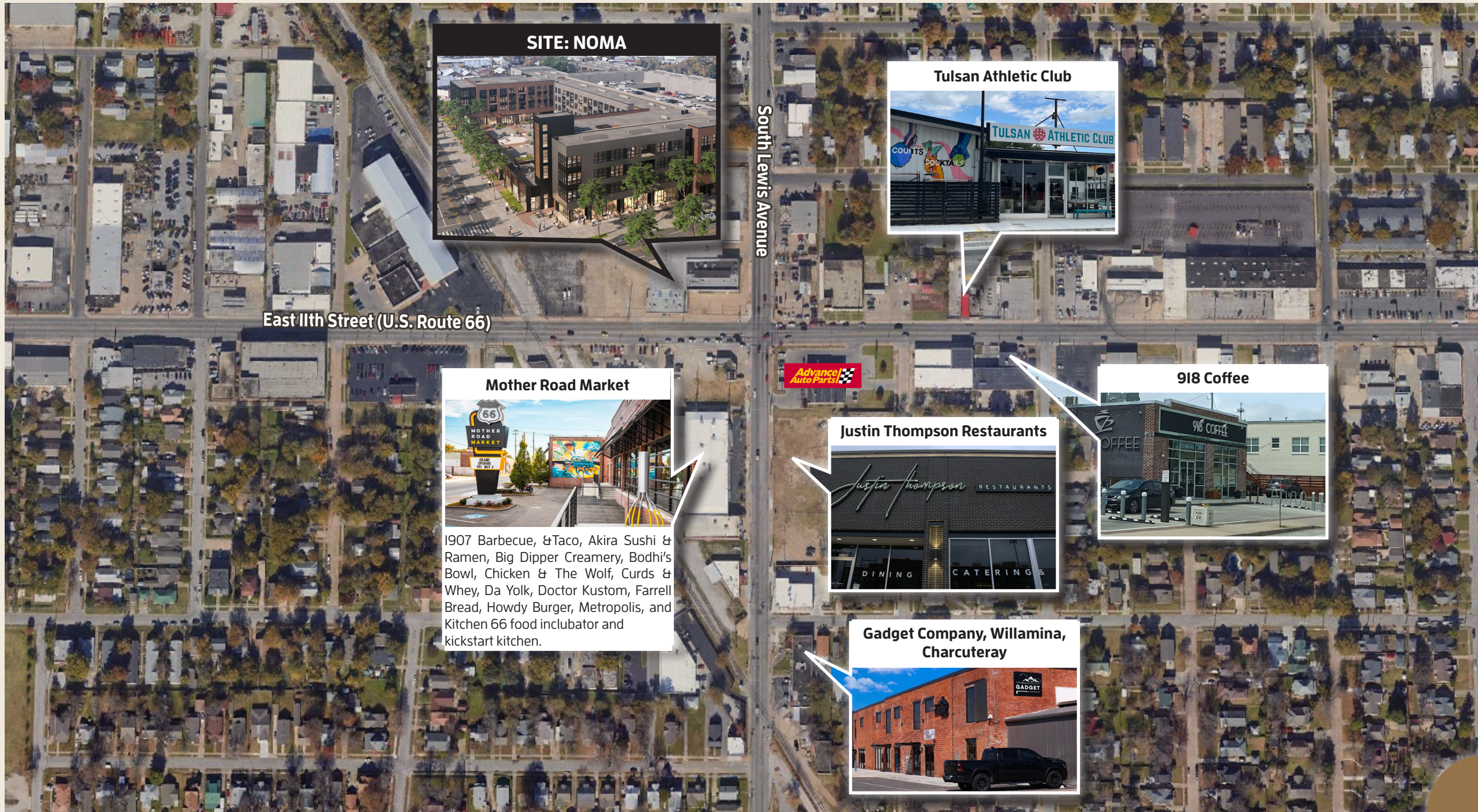
NOMA

north of market



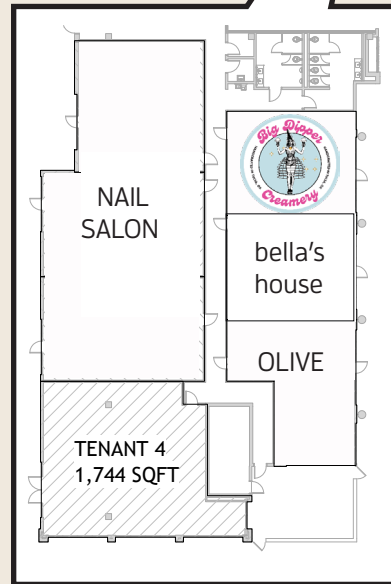
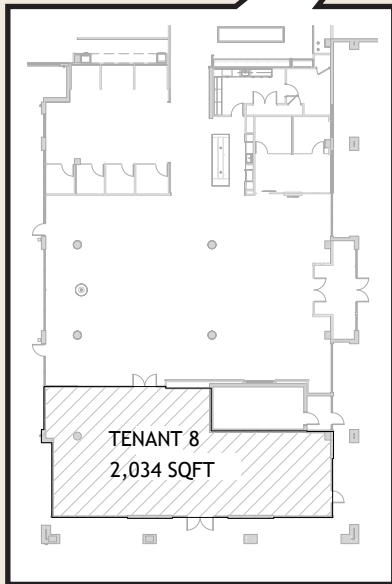
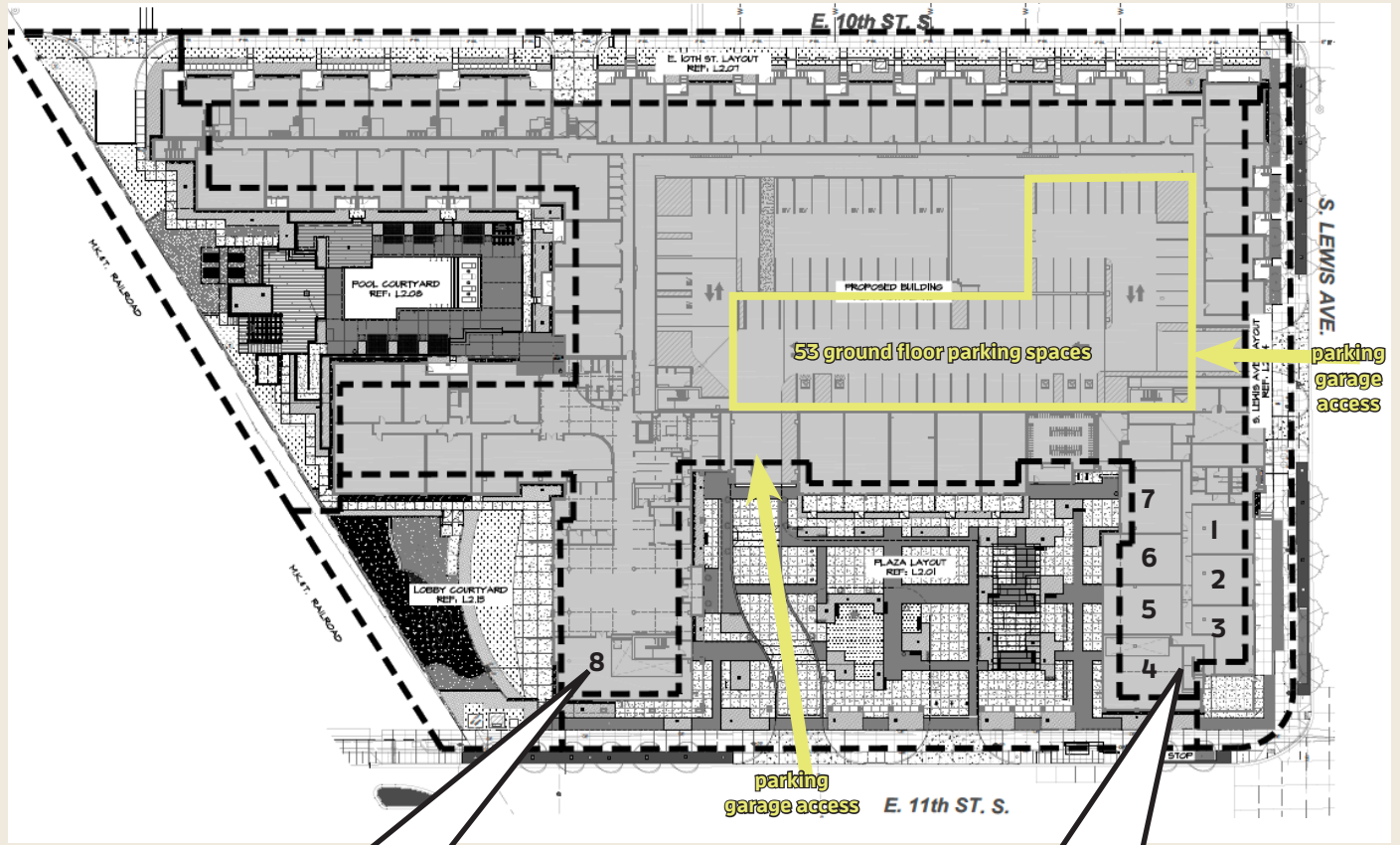
Property Highlights

- Located on Historic U.S. Route 66 at the northwest corner of East 11th Street and South Lewis Avenue and across from the popular food hall, Mother Road Market
- Restaurant, retail, service and light office space available
- The mixed-use project includes 256 luxury apartments with amenities like co-working space, fitness center, rooftop clubhouse, shaded dog park, cabana pool and multiple greenspace courtyards
- Recent improvements to the intersection include updates to traffic lights, waterlines, sewer system, and roadways with ongoing area beautification projects, including Route 66 signage, lighting, landscaping and benches.
- The property will have a four-story parking garage accessible from both Lewis Avenue and 11th Street with 53 spaces immediately available on the ground floor



Demographics

Distance	Average Household Income	Population	Daytime Population
1 Mile	\$74,024	13,765	20,232
3 Miles	\$88,154	94,394	89,789
5 Miles	\$80,537	190,075	149,934



Contact

Caitlin Shores, CCIM
+1 918.688.4040

caitlin@wscommercial.co

Lindsey Warren
+1 918.946.6791

lindsey@wscommercial.co