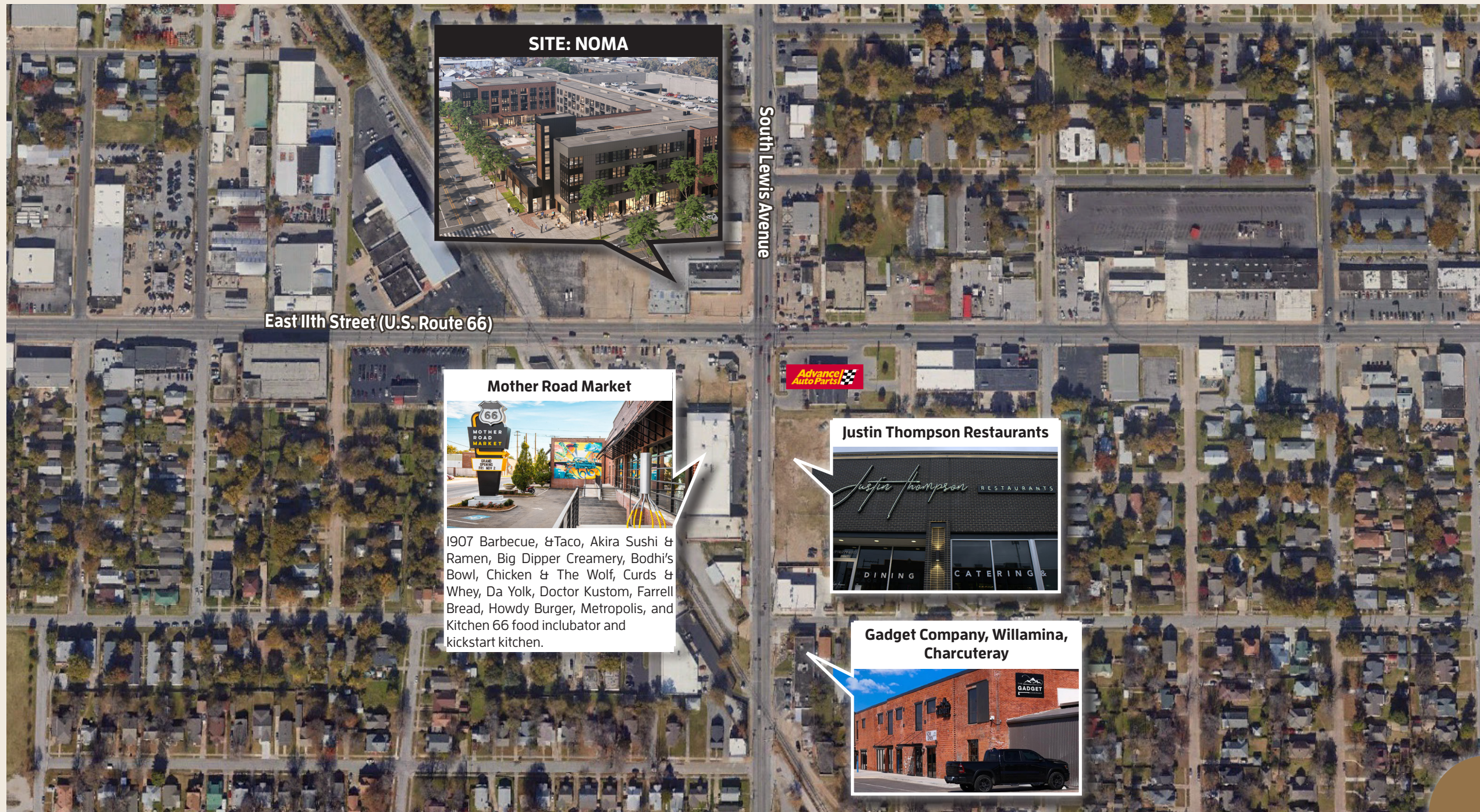




Property Highlights



- Located on Historic U.S. Route 66 at the northwest corner of East 11th Street and South Lewis Avenue and across from the popular food hall, Mother Road Market
- The mixed-use project includes 256 luxury apartments with amenities like co-working space, fitness center, rooftop clubhouse, shaded dog park, cabana pool and multiple greenspace courtyards
- Recent improvements to the intersection include updates to traffic lights, waterlines, sewer system, and roadways with ongoing area beautification projects, including Route 66 signage, lighting, landscaping and benches.
- The property will have a four-story parking garage accessible from both Lewis Avenue and 11th Street with 53 spaces immediately available on the ground floor

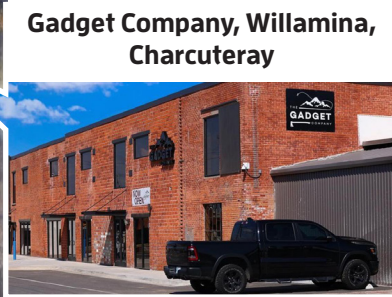


East 11th Street (U.S. Route 66)

South Lewis Avenue

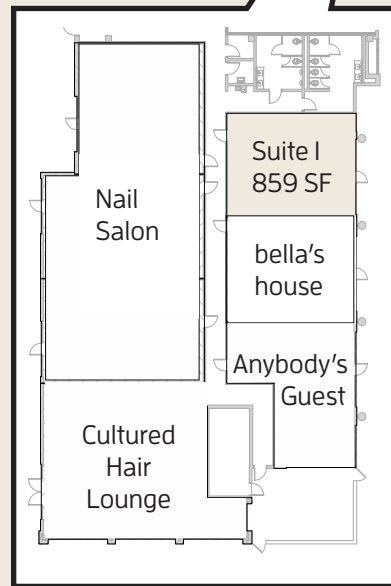
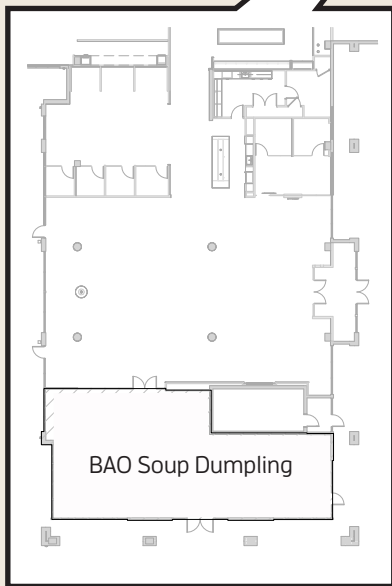
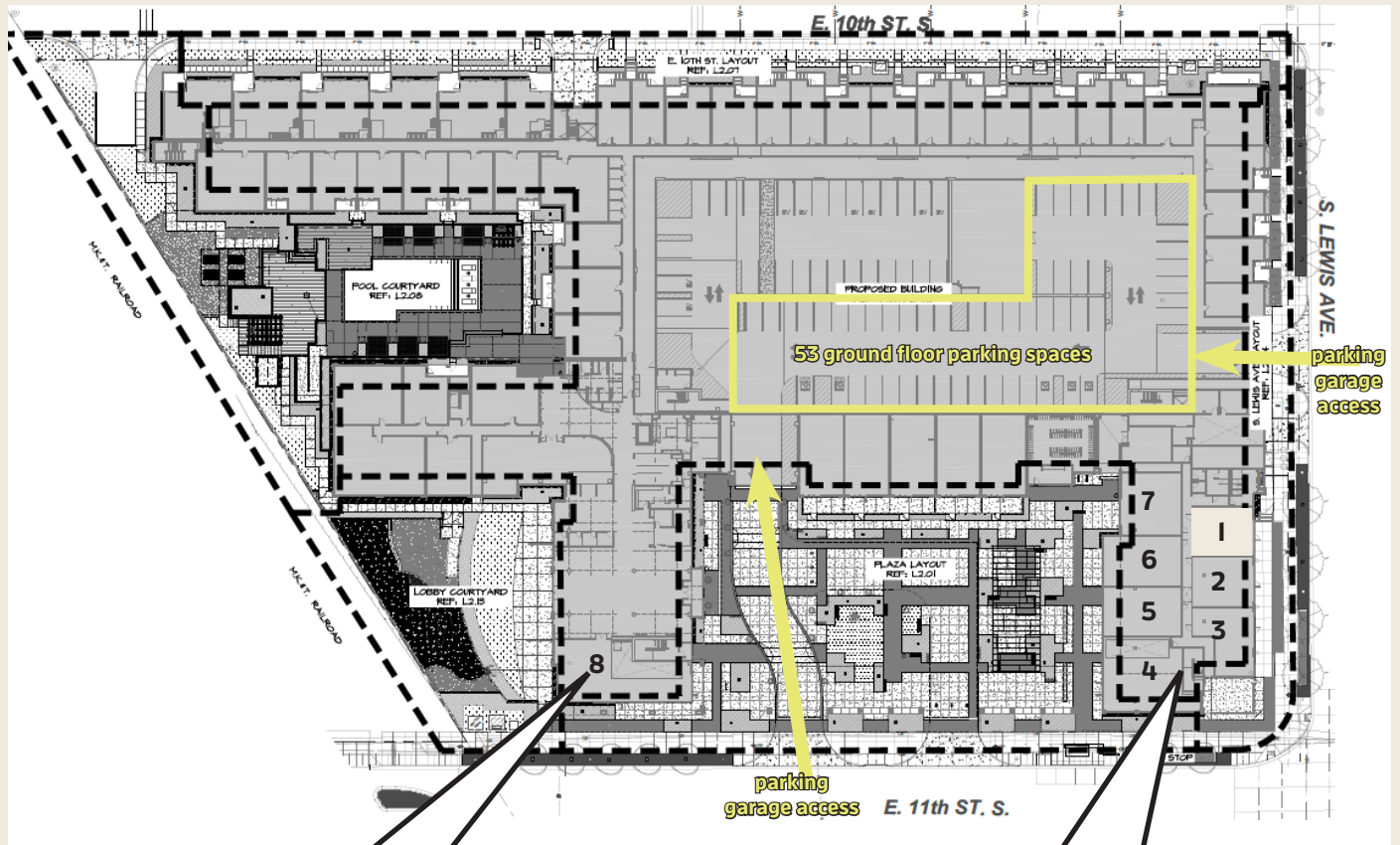


1907 Barbecue, &Taco, Akira Sushi & Ramen, Big Dipper Creamery, Bodhi's Bowl, Chicken & The Wolf, Curds & Whey, Da Yolk, Doctor Kustom, Farrell Bread, Howdy Burger, Metropolis, and Kitchen 66 food incubator and kickstart kitchen.



Demographics

Distance	Average Household Income	Population	Daytime Population
1 Mile	\$74,024	13,765	20,232
3 Miles	\$88,154	94,394	89,789
5 Miles	\$80,537	190,075	149,934



Contact

Caitlin Shores, CCIM
+1 918.688.4040

caitlin@wscommercial.co

Lindsey Warren
+1 918.946.6791

lindsey@wscommercial.co